

ECMLG 2023

19th European Conference on Management Leadership and Governance
23-24 November 2023, London, UK

Mini Track on Leadership in Public Administration Complex Contexts

Mini Track Chairs: Dr Elisabete Fialho and Dr Maria José Sousa, University of Lisbon and Dr Ana Moreira, ISPA-Instituto Universitário, Lisbon, Portugal

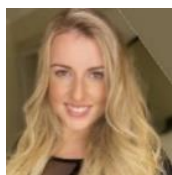


Unexpectedly, COVID-19 has changed the world in a way no one thought was possible. This situation poses a considerable challenge to the human resources of public and private organisations. A fast adaptation is needed to manage the resources while people are in “forced” teleworking. Effective e-leadership is essential to continue good results in this complex business environment for leaders and employees.

The COVID-19 pandemic reveals that the public sector is facing more complex problems that must be solved. The future capacity to respond to turbulent problems such as COVID-19 requires several strategies that the leaders must implement.

Suggested topics include but are not limited to:

- Public Administration leadership
- Leadership in complex contexts
- Public Administration Human Resources
- Solutions to public administration problems
- Public Administration leadership after Covid19
- Governance in Public Administration
- Digitalization of Public Administration
- Innovation in Public Services



Dr Elisabete Fialho is a Public service worker in presidency of the council of ministers. Degree in management. Master in public administration and frequency in Public Policy PhD.



Dr Maria José Sousa is Pro-Rector for the Development of Distance Learning and professor and researcher at ISCTE/Instituto Universitário de Lisboa. She was a Senior Researcher at the GEE of the Ministry of Economy, responsible for Innovation, Research and Entrepreneurship Policies, and Knowledge and Skills Manager at AMA, IP. She has co-authored more than 100 scientific articles and book chapters and is a guest editor for more than 5 special editions of Elsevier and Springer.



Dr Ana Maria da Palma Moreira, PhD in Social and Organizational Psychology, done at ISPA-Instituto Universitário. Professor of Curricular Units of Human Factors I, Human factor II, Organisational Behaviour I, Organizational Psychology I, Organizational Psychology II, Statistical Analysis I and Statistical Analysis II at ISPA-Instituto Universitário, in Lisbon.

Submission details

In the first instance a 300 word abstract is required, to be received by **3rd May 2023** using the online submission form at <http://www.academic-conferences.org/conferences/ecmlg/ecmlg-call-for-papers/>

If you have any questions about this track, please email the chairs elisabetefialho@gmail.com
amoreira@ispa.pt mjdcousa@gmail.com

See more about ECMLG at <http://www.academic-conferences.org/conferences/ecmlg/>